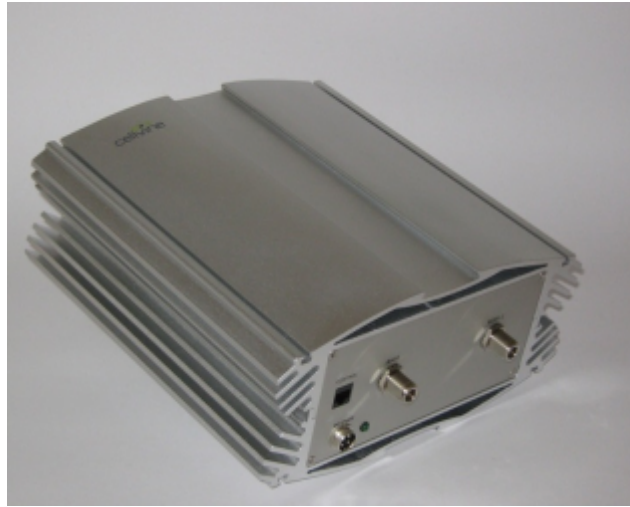


## Features

- High linearity & low noise amplifiers for maximal coverage.
- Compact size with high reliability
- Simple installation
- Programmable shut down
- Automatic Gain Control (AGC)
- Automatic gain balance for UL & DL
- Gain tuning and power readouts via PC terminal and Cellular modem
- Designed to transmit GSM signal and meet ETSI Standards



## Product Description

Cellvine's highly medium power indoor repeater has been designed to enhance and extend cellular coverage into medium size buildings, restaurants, underground areas, office buildings and other similar indoor environments.

It has a built-in controller that can be access by a mini-USB port or by a remote terminal via modem. The controller can be set to auto shutdown according to required operation scheme.

### \*M-Cellular Modem.

With a GSM modem, the repeater can be controlled by a remote PC terminal using Cellvine's GUI and management system. ,parameters like :

Max output power, max Gain, AGC and alarms can be managed and monitor remotely.

## Specifications

Parameter		Specifications
Frequency Range	Down	1805-1880-MHz-TBD
	Up	1710-1785 MHz-TBD
Composite Linear RF Output Power		DL : 30 dBm UP : 24 dBm
OIP3		DL/UL : 48 ±1 dBm
System Max Gain		80 dB ±2
Noise Figure @ Max Gain		< 5 dB
Pass Band Ripple		< 4 dB p-p
Out of Gain Band <i>from frequency corner according to ETSI</i>		±400 KHz < 50 dB ±600 KHz < 40 dB ±1MHz < 35 dB ±5 MHz < 25dB
Gain tuning range		31 dB in 1dB steps
Group delay		< 5 µsec
Spurious Emissions		9Khz-1Ghz : ≤ -36dBm 1-12.75Ghz ≤ -30dBm
RF input (no damage)		-20 dBm
Alarms & Readouts		DL low power, DL/UL overpower, DL/UL Gain
VSWR		1.5:1 MAX
Operating conditions		Indoor (-20 to +50 C° ); IP-51
*Available Software tuning		Software control by local PC terminal or Cellular modem
Dimension & Weight		275 mm X 272 mm X 129 mm
Connectors		N-type –Base& Mobile
Power Requirements		10 VDC, 5 A Max. from included power supplier