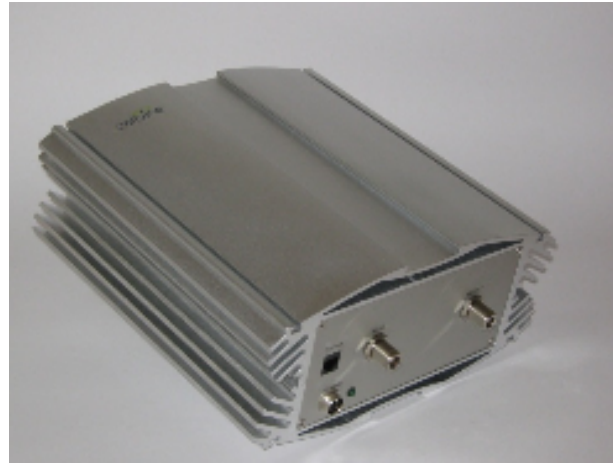


## Features

- UMTS power repeater
- High linearity & low noise amplifiers for maximal coverage.
- Compact size with high reliability
- Simple installation
- Automatic Gain Control (AGC)
- Automatic gain balance for UL & DL channels .
- Designed to transmit UMTS signals And to meet 3GPP Standards.



## Product Description

Cellvine's highly compact indoor repeater has been designed to enhance and extend cellular coverage into small size buildings, restaurants, underground areas, office buildings and other similar indoor environments.

The unit is very simple to install and can be set to automatically obtain maximal coverage.

The unit has a build in controller that can be access by a local RS232 port or by a remote terminal using a modem (optional). The controller can be set to auto shut down when oscillations Occurs or when high input signals.

The remote control using a modem option Requires additional modem unit which is not Included in the basic model.

## Specifications

Parameter		Specifications
Frequency Range	Down	2110-2170 MHz-TBD
	Up	1920-1980 MHz-TBD
Output Composite Power <i>1FA-ACLR measured for 3Gpp Test mode 5 , HSDPA@HSUPA, 64DPCH BW=3.84 Mhz, offset +/-5 Mhz -45 dBC offset +/-10 Mhz -50 dBC</i>		DL : 20 dBm- HSDPA UP: 12 dBm- HSUPA
System Max Gain		75 dB ±2
Noise Figure		5 dB
Pass Band Ripple		4 dB p-p
Out of band Gain from frequency corner <i>according to 3GPP</i>		0.2- 1 Mhz - 60 dB 1 -10 Mhz - 45 dB >10 Mhz - 35 dB
Gain tuning range		30dB in 1dB steps
AGC Output Level		+10...20 dBm ( programmable ) 20 dBm default
Protection (optional)		Overpower & oscillation Programmable shut down
VSWR		2:1 MAX
Indicators \ Controls		LED : DC power , TX power ,DL Overpower shutdown
Operating conditions		Indoor (-5 to +45C )
Available Software tuning		Full software control by local PC terminal or modem(optional)
Dimension		275 mm X 272 mm X 129 mm
Connectors		N-type –Base& Mobile
Power Requirements		10VDC, 5 A Max. from included power supplier